

WA HF | RADIO FREQUENCY TEST FIXTURE SERIES

GENERAL DATA

- RF test fixture series with parallel closing pressure mechanism
- Modular system enables individual customization
- Shielding of internal and external RF signals
- Ergonomic design for ease of use
- No manual effort required due to pneumatic drive
- Maximum safety thanks to integrated finger protection
- Depending on the model, the external dimensions are between 550x580x400 mm and 702x580x404 mm
- Depending on the model, the usable areas are between 190x180 mm und 380x2750 mm
- External interface according to customer requirements
- Automation possible
- Suitable for acoustic / optical testing



MODEL VARIANTS

MODEL*	USEABLE AREA mm	OUTSIDE DIMENSIONS mm	WEIGHT** kg	TANDEM	INTERACE	INTERCHANGE- ABLE KIT
WA-HF-4002	190x180	550x580x400	20	-	VG	WS-400
WA-HF-8000	380x270	702x580x404	26	-	VG	WS-800

* Prices and delivery times on request

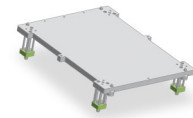
** Weight specification for basic appliance incl. interchangeable kit (WS)



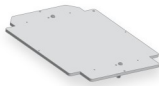
PRODUKTAUFBAU



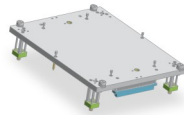
basic device



Pressure plate (AP)



moving plate (PAP)



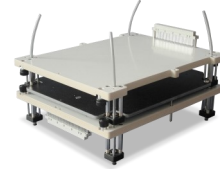
probe plate (KTP)

ACCESSORIES

INTERCHANGEABLE KITS (WS)*

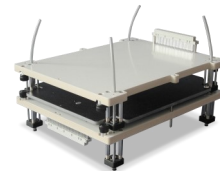
WS-400

incl. internal 96pol. VG bar interface
max. product area: 190 x 180 mm



WS-800

incl. internal 96pol. VG bar interface
max. product area: 380x270 mm



ABSORBING-MATS

WA-HF-400x-ABS

High-End Absorbing mat with an attenuation of 20 dB
suitable for WA-HF-4002



WA-HF-800x-ABS

High-End Absorbing mat with an attenuation of 20 dB
suitable for WA-HF-8000

* Interchangeable kits consist of a pressure plate (AP), moving plate (PAP) and probe plate (KTP).
AP, PAP and KTP are available separately.



ACCESSORIES

CASE RAISES AND HORIZONTAL POSITION MODULE

MFG-700-GEHÄUSEERHÖHUNG-90

Height: 45 mm; made of aluminum; light grey; suitable for WA-HF-8000

WA-HF-4002-ROC

Height: 90 mm; made of aluminum; light grey; suitable for WA-HF-4001

WA-HF-4004- HOR

Horizontal position module

Height: 45 mm; made of aluminum; light grey



INTERFACE PLATE FOR RF CHAMBER

SCHNITTSTELLENPLATTE TYP 1

Suitable for WA-HF-4002

Outside dimension: 210 x 95 mm; useable area: 180 x 70 mm

SCHNITTSTELLENPLATTE TYP 2

Suitable for WA-HF-8000

Outside dimension: 250 x 95 mm; useable area: 230 x 70 mm





ACCESSORIES

INTERFACES

INTERFACE FOR AUDIO, DATA, POWER , RESERVE

Electrical capacity: 1000 pF

HF-SUB-D-9-M-L 9-pin. D-Sub, filtered

HF-SUB-D-15-M-L 15-pin. D-Sub, filtered

HF-SUB-D-25-M-L 25-pin. D-Sub, filtered



HF-USB-A-M

USB Interface module

Electrical capacity: 10 pF Pi damping > 60dB up to 3GHz



HF-RJ 45

Ethernet Interface module RJ 45 damping >60dB up to 3 GHz

Filter Designation: 10 pF Pi



Festo-SCN-PK-3

Pneumatic block

Max. 8 compressed air feed-throughs plug nipple - bulkhead fitting

Hose diameter 6 mm

