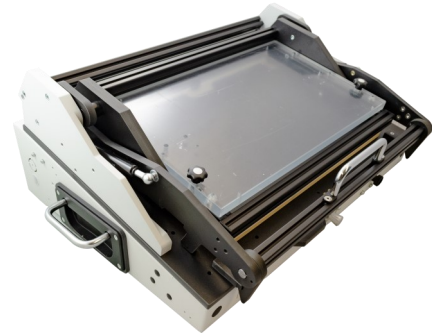


## WA M 15 | MECHANICAL FIXTURE

### GENERAL

- Mechanical test fixture series with parallel closing pressure mechanism
- Modular system allows individual expansion
- Available as tandem version
- Outer dimensions depending on model between 280x450x240 mm and 740x510x250 mm
- Usable areas, depending on the model, are between 180x110 mm and 520x250 mm
- Internal interface as VG bar (standard system) or Contact pin interface (I system)
- External interface according to customer requirements
- Interchangeable kits are compatible with WA-P-30 series pneumatic fixture



### SYSTEM VARIANTS

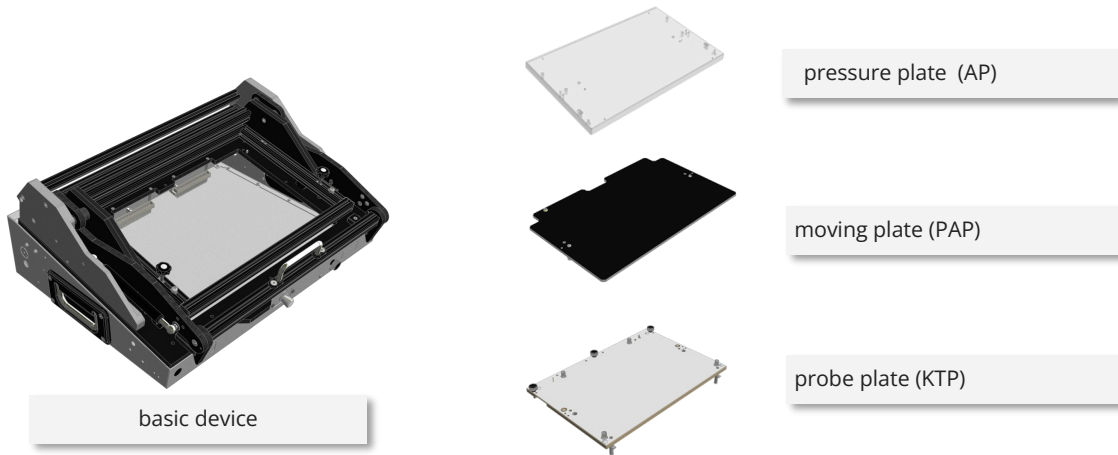
MODEL*	USEABLE AREA	OUTER DIMENSION	WEIGHT**	TANDEM	INTERFACE	INTERCHANGEABLE
	mm	mm	kg			
WA-M-1500	350x230	530x450x240	16	-	VG	WS-00
WA-M-1500-I	330x180	530x450x240	16	-	I	WS-00-I
WA-M-1501	205x110	280x450x240	12	-	VG	WS-01
WA-M-1501-T	2x 205x110	560x450x240	17	ja	VG	WS-01
WA-M-1501-I	180x110	280x450x240	12	-	I	WS-01-I
WA-M-1501-I-T	2x 180x110	560x450x240	17	ja	I	WS-01-I
WA-M-1510	520x295	740x510x250	20	-	VG	WS-10
WA-M-1510-I	520x250	740x510x250	20	-	I	WS-10-I
WA-M-1511	295x180	370x510x250	16	-	VG	WS-11
WA-M-1511-T	2x 295x180	740x510x250	21	ja	VG	WS-11
WA-M-1511-I	260x160	370x510x250	16	-	I	WS-11-I
WA-M-1511-I-T	2x 260x160	740x510x250	21	Ja	I	WS-11-I

\* Prices and delivery times on request

\*\* Weight specification for basic unit incl. interchangeable kit (WS)



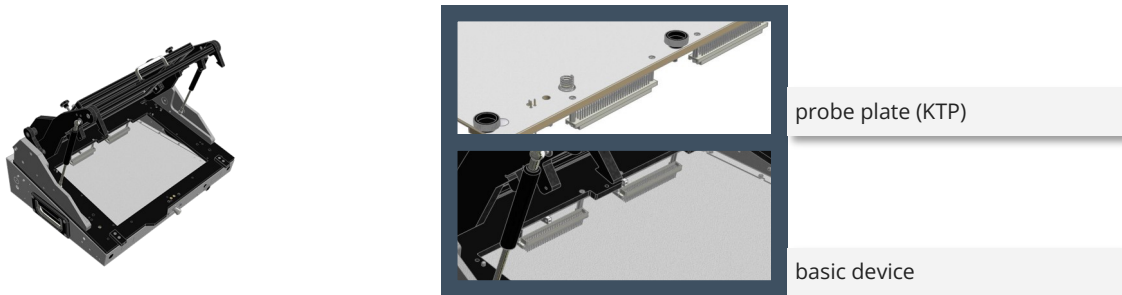
PRODUKTAUFBAU



SYSTEM VARIANTS

standard system

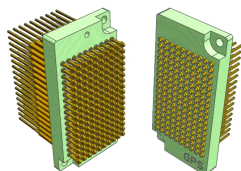
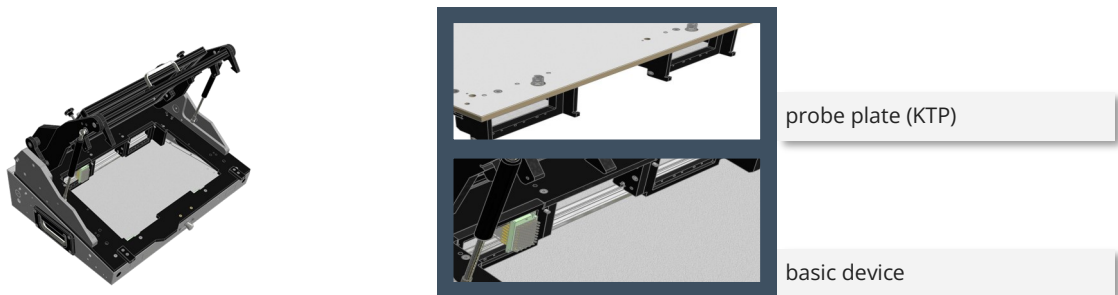
Male-female interface with VG strips



I-system:

Spring contact interface, including internal holder for interface blocks

Advantageous for frequent exchange of exchangeable kits.



EX. TSI-50-201 / TSI-50-101

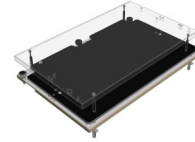


ACCESORIES

EXCHANGEABLEKITS (WS)\*

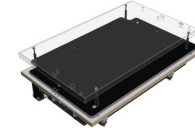
WS-00

incl. internal 192pol. VG bar interface  
max. product area: 350x230mm



WS-00-I

Incl. holder for internal CONTACT PIN interface, 6 interface blocks  
max. product area: 330x180mm



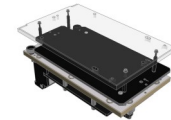
WS-01

incl. internal 96pol. VG bar interface  
max. product area: 205x110mm



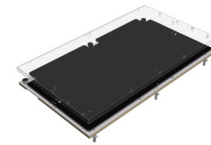
WS-01-I

incl. holder for internal CONTACT PIN interface, 3 interface blocks  
max. product area: 180x110mm



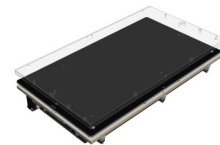
WS-10

incl. internal 4x96pol. VG bar interface  
max. product area: 520x295mm



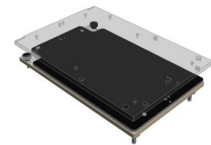
WS-10-I

Incl. holder for internal CONTACT PIN interface, 6 interface blocks  
Extension to 12 interface blocks possible  
max. product area: 520x250mm



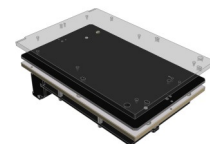
WS-11

incl. internal 96pol. VG bar interface  
max. product area: 295x180mm



WS-11-I

incl. t bracket for internal CONTACT PIN interface, 5 interface blocks  
max. product area: 260x180mm



\* Interchangeable kits consist of moving plate (AP), support plate (PAP) and probe plate (KTP) and, if necessary, a separate socket protection plate (HSP). AP, PAP, KTP and HSP are sold separately.



ACCESSORIES

RAISE OF HOUSING

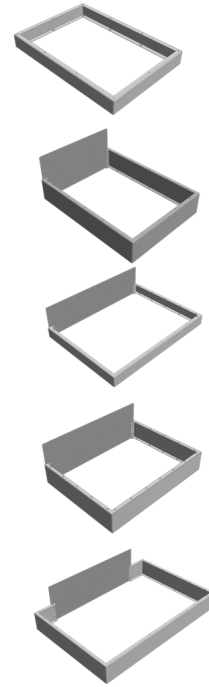
MFG-280-GEHÄUSEERHÖHUNG-45  
Height: 45mm; made of aluminium; light grey

MFG-350-GEHÄUSEERHÖHUNG-90  
Height: 90mm; made of aluminium; light grey

MFG-530-GEHÄUSEERHÖHUNG-45  
Height: 45mm; made of aluminium; light grey

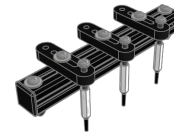
MFG-530-GEHÄUSEERHÖHUNG-90  
Height: 90mm; made of aluminium; light grey

MFG-700-GEHÄUSEERHÖHUNG-90  
Height: 90mm; made of aluminium; light grey



ADJUSTABLE PRESSURE ELEMENTS

WA-AE-140  
Traverse with three height-adjustable hold-down devices  
pre-assembled, incl. fastening material, L 158mm



WA-AE-400  
Traverse with three height-adjustable hold-down devices  
pre-assembled, incl. fastening material, L 406mm



WA-AE-210  
Traverse with three height-adjustable hold-down devices  
pre-assembled, incl. fastening material, L 226mm



WA-AE-410  
Traverse with five height-adjustable hold-down devices  
pre-assembled, incl. fastening material, L 578mm





## ACCESSORIES

### SUSPENSION TEST SUPPORTS

WA-GPA-13 3N  
 Force: 3N; incl. mounting sleeve  
 Spring height (extended): 13.3mm  
 Head diameter: 4mm  
 Material: nickel

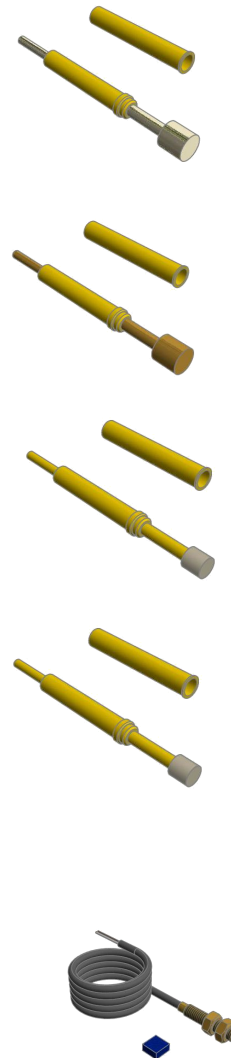
WA-GPA-13 6N  
 Force: 6N; incl. mounting sleeve  
 Spring height (extended): 13.3mm  
 Head diameter: 4mm  
 Material: brass

WA-GPA-13 3N K  
 Force: 3N; incl. mounting sleeve  
 Spring height (extended): 13.3mm  
 Head diameter: 3mm  
 Material: plastic

WA-GPA-13 6N K  
 Force: 6N; incl. mounting sleeve  
 Spring height (extended): 13.3mm  
 Head diameter: 3mm  
 Material: plastic

### Solenoid starter switch

WA-M-1500-MS



GPS PRÜFTECHNIK GMBH

Steigerring 25 | D-59075 Hamm  
 ✉ info@gps-prueftechnik.de

GPS PRÜFTECHNIK RHEIN/MAIN GMBH

Ferdinand-Porsche-Str. 17 | D-63500 Seligenstadt  
 ✉ seligenstadt@gps-prueftechnik.de

GPS PRÜFTECHNIK Kft.

Zrí-nyi Miklós utca 105 | H-8900 Zalaegerszeg  
 ✉ info@gps-pruftechnik.hu