

WA P 30 | PNEUMATIC TEST FIXTURE SERIES

GENERAL

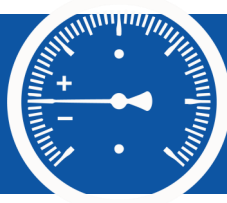
- Pneumatic test fixture series with parallel closing pressure mechanism
- Available as tandem version
- Modular system enables individual expansion
- Ergonomic design
- No manual effort necessary due to pneumatic drive (24V/6bar)
- All contacting types possible
- Maximum safety due to integrated finger protection
- External dimensions, depending on the model, are between 280x450x240 mm and 740x510x250 mm
- Usable areas, depending on the model, are between 180x110 mm und 520x250 mm
- Internal interface VG (standard system) or FKS-Interface (I-system)
- External interface according to customer requirements
- Interchangeable kits are compatible with mechanical adapter series WA-M-15



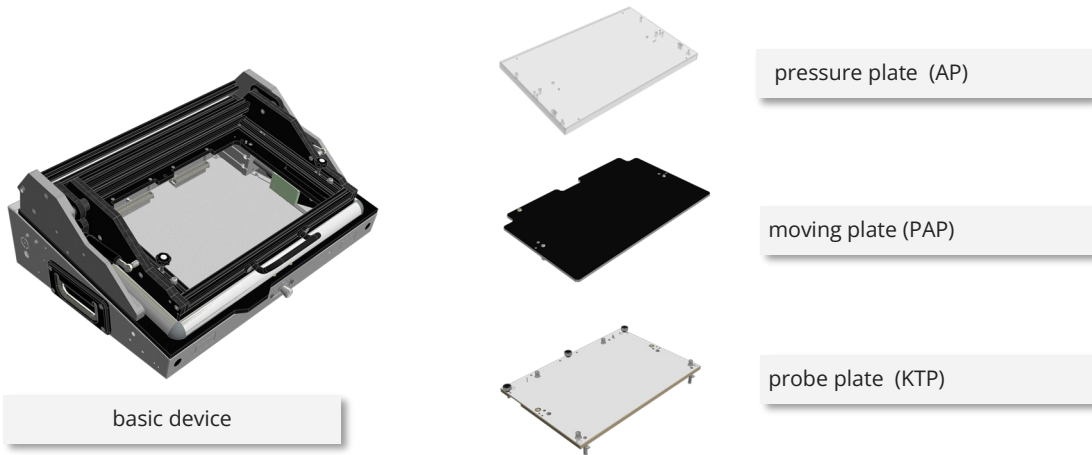
MODEL VARIANTS

MODEL*	USEABLE AREA	OUTSIDE DE- MENSIONS	WEIGHT**	TANDEM	INTERFACE	INTERCHANGE- ABLE KIT
	mm	in mm	kg		intern	
WA-P-3000	350x230	530x450x240	18	-	standard	WS-00
WA-P-3000-I	330x180	530x450x240	19	-	I	WS-00-I
WA-P-3001	205x110	280x450x240	15	-	standard	WS-01
WA-P-3001-I	180x110	280x450x240	15	-	I	WS-01-I
WA-P-3010	520x295	740x510x250	25	-	standard	WS-10
WA-P-3010-I	520x250	740x510x250	25	-	I	WS-10-I
WA-P-3011	295x180	370x510x250	18	-	standard	WS-11
WA-P-3011-I	295x180	370x510x250	19	-	I	WS-11-I
WA-P-3011-T	2x 295x180	740x510x250	25	ja	standard	WS-11
WA-P-3011-I-T	2x 260x160	740x510x250	25	ja	I	WS-11-I

* Prices and delivery times on request



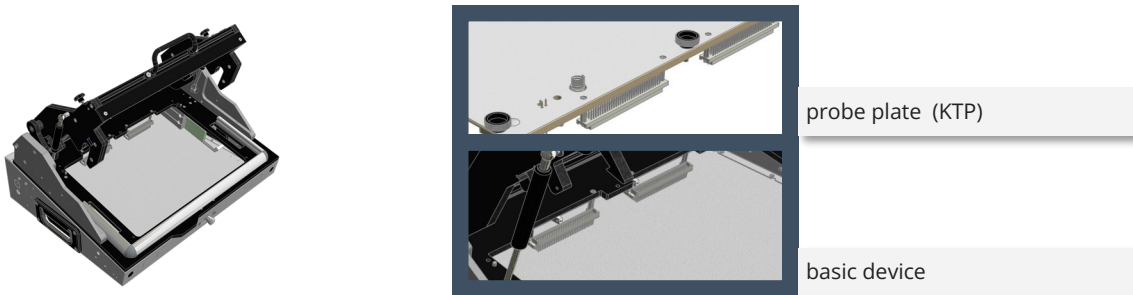
PRODUCT DESIGN



SYSTEM VARIANTS

Standard system

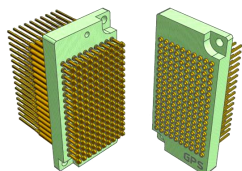
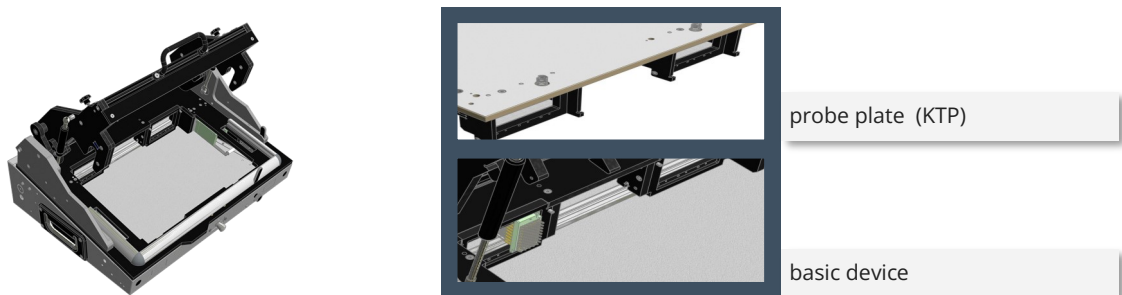
Male-female interface with VG strips



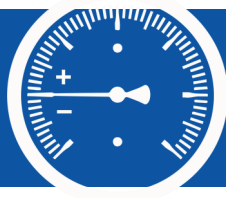
"I" System:

Spring contact interface, including internal holder for interface blocks

Advantageous for frequent exchange of exchangeable kits



Ex. TSI-50-201 / TSI-50-101

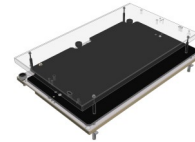


ACCESORIES

EXCHANGEABLE KITS (WS)*

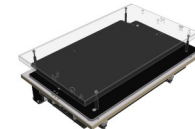
WS-00

incl. internal 192pol. VG bar interface
max. product area: 350x230mm



WS-00-I

Incl. holder for internal CONTACT PIN interface, 6 interface blocks
max. product area: 330x180mm



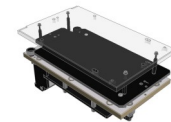
WS-01

incl. internal 96pol. VG bar interface
max. product area: 205x110mm



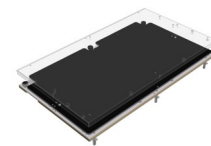
WS-01-I

incl. holder for internal CONTACT PIN interface, 3 interface blocks
max. product area: 180x110mm



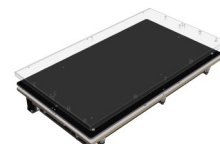
WS-10

incl. internal 4x96pol. VG bar interface
max. product area: 520x295mm



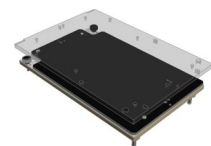
WS-10-I

incl. holder for internal CONTACT PIN interface, 3 interface blocks
Extension to 12 interface blocks possible
max. product area: 520x250mm



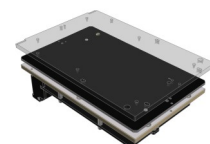
WS-11

incl. internal 96pol. VG bar interface
max. product area: 295x180mm

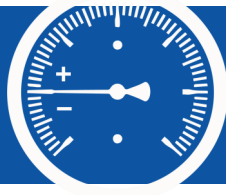


WS-11-I

incl. t bracket for internal CONTACT PIN interface, 5 interface blocks
max. product area: 260x180mm



* Interchangeable kits consist of moving plate (AP), support plate (PAP), probe plate (KTP) and, if necessary, a separate socket protection plate (HSP). AP, PAP, KTP and HSP are sold separately.



ACCESSORIES

RAISES OF HOUSING

MFG-280-GEHÄUSEERHÖHUNG-45
Height: 45mm; made of aluminium; light grey



MFG-350-GEHÄUSEERHÖHUNG-90
Height: 90mm; made of aluminium; light grey



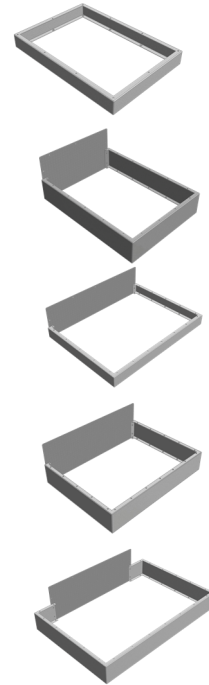
MFG-530-GEHÄUSEERHÖHUNG-45
Height: 45mm; made of aluminium; light grey

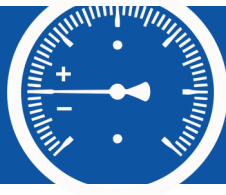


MFG-530-GEHÄUSEERHÖHUNG-90
Height: 90mm; made of aluminium; light grey



MFG-700-GEHÄUSEERHÖHUNG-90
Height: 90mm; made of aluminium; light grey





ACCESORIES

SUSPENSION TEST SUPPORTS

WA-GPA-13 3N
 Force: 3N; incl. mounting sleeve
 Spring height (extended): 13.3mm
 Head diameter: 4mm
 Material: nickel

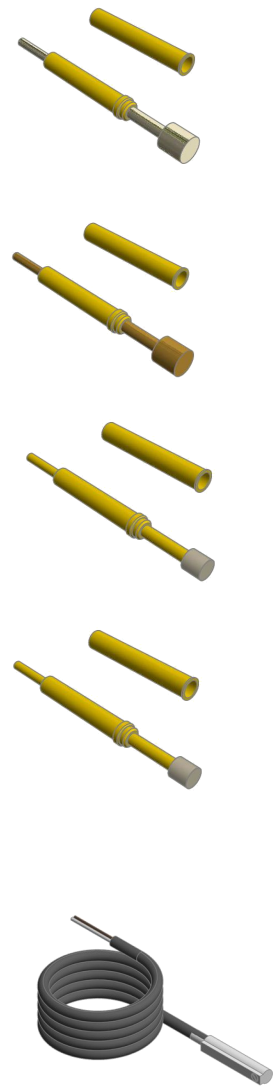
WA-GPA-13 6N
 Force: 6N; incl. mounting sleeve
 Spring height (extended): 13.3mm
 Head diameter: 4mm
 Material: brass

WA-GPA-13 3N K
 Force: 3N; incl. mounting sleeve
 Spring height (extended): 13.3mm
 Head diameter: 3mm
 Material: plastic

WA-GPA-13 6N K
 Force: 6N; incl. mounting sleeve
 Spring height (extended): 13.3mm
 Head diameter: 3mm
 Material: plastic

limit switches

(D-A93); including installation and connection to the control board



GPS PRÜFTECHNIK GMBH

Steigerring 25 | D-59075 Hamm
 ✉ info@gps-prueftechnik.de

GPS PRÜFTECHNIK RHEIN/MAIN GMBH

Ferdinand-Porsche-Str. 17 | D-63500 Seligenstadt
 ✉ seligenstadt@gps-prueftechnik.de

GPS PRÜFTECHNIK Kft.

Zrí-nyi Miklós utca 105 | H-8900 Zalaegerszeg
 ✉ info@gps-pruftechnik.hu